

W A

葡萄牙当代建筑与景观建筑 (1)

CONTEMPORARY ARCHITECTURE &
LANDSCAPE ARCHITECTURE IN PORTUGAL (1)



圣伊萨贝尔的两栋住宅，里斯本，葡萄牙

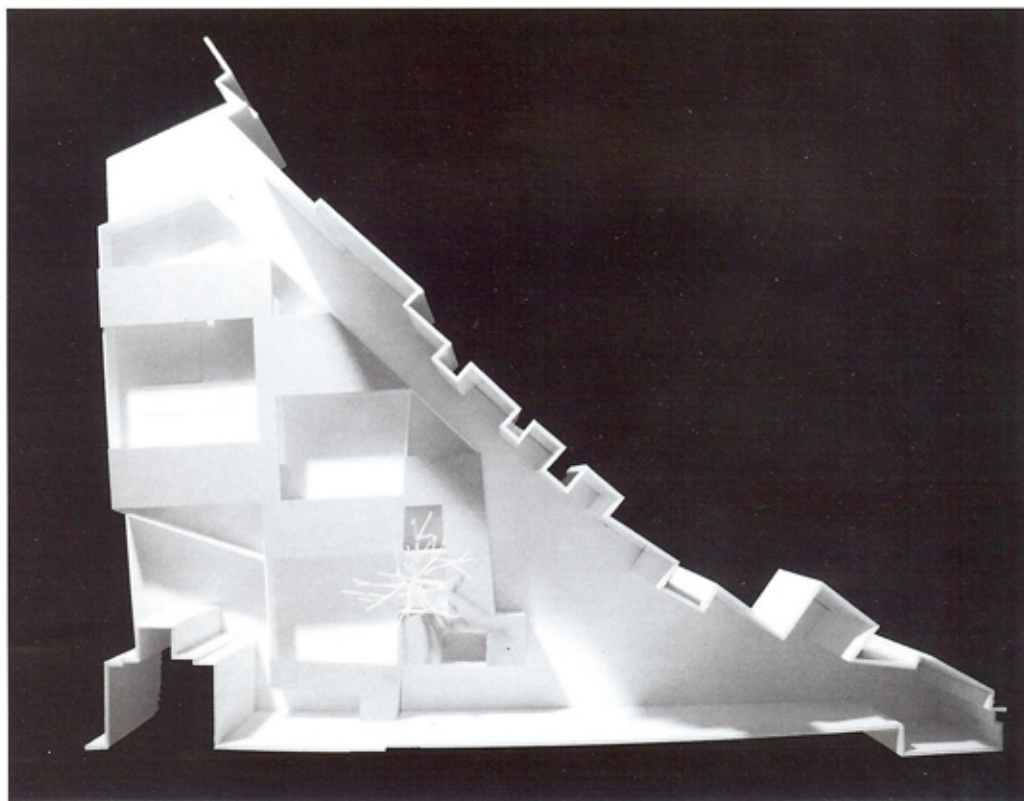
TWO HOUSES IN SANTA ISABEL, LISBON, PORTUGAL

建筑设计：里卡多·巴克·戈登
ARCHITECT: Ricardo Bak Gordon

这两栋住宅将坐落在一个已经被毫无特色的建筑的背面、后院和野生植物的生长所破坏了的的城市街区中。我们需要从其中一幢大楼底下穿过才能到达这块基地。这两栋住宅是一项综合运作的组成部分，目的在于寻求一种住宅空间与由场地边界上连续的混凝土墙围合出的花园的交替模式。这些花园应该是方案的主要特征，它们将是这个街区的内部空间，并赋予整个城市一片崭新的花园肌理。□（徐知兰 译）

合作者 / Collaborator: Nuno Costa

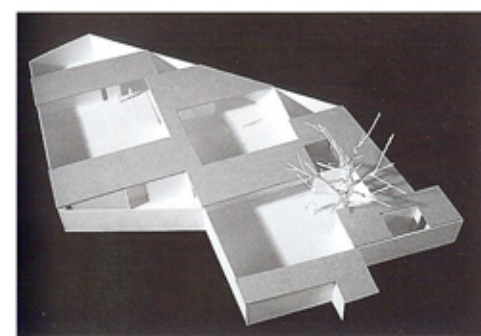
The houses will be located inside of a block, devastated by the uncharacterized buildings backs, backyards and the grow of wild trees and plants. We reach the plot passing beneath one of the buildings. The two houses are part of a global operation that seeks to establish a pattern of alternated house spaces and walled gardens, leveled by the presence of a continuous concrete wall in the plot's limits. The gardens are designed to assume the main project roll, giving the block interior and the city, a new garden context. □



2



4



3

- 1 模型 / Model (摄影 / Photo, Bak Gordon, architectos)
- 2 总平面 / Site plan
- 3 模型 / Model (摄影 / Photo, Bak Gordon, architectos)
- 4 平面 / Plan